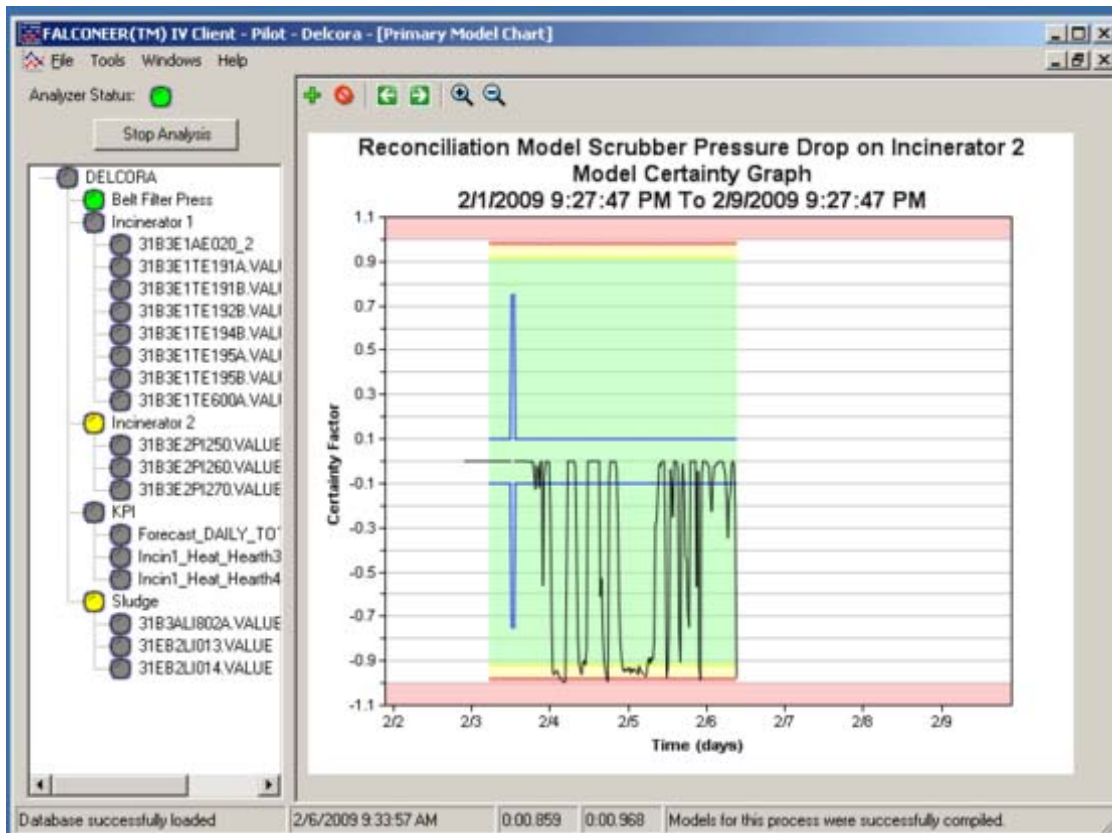
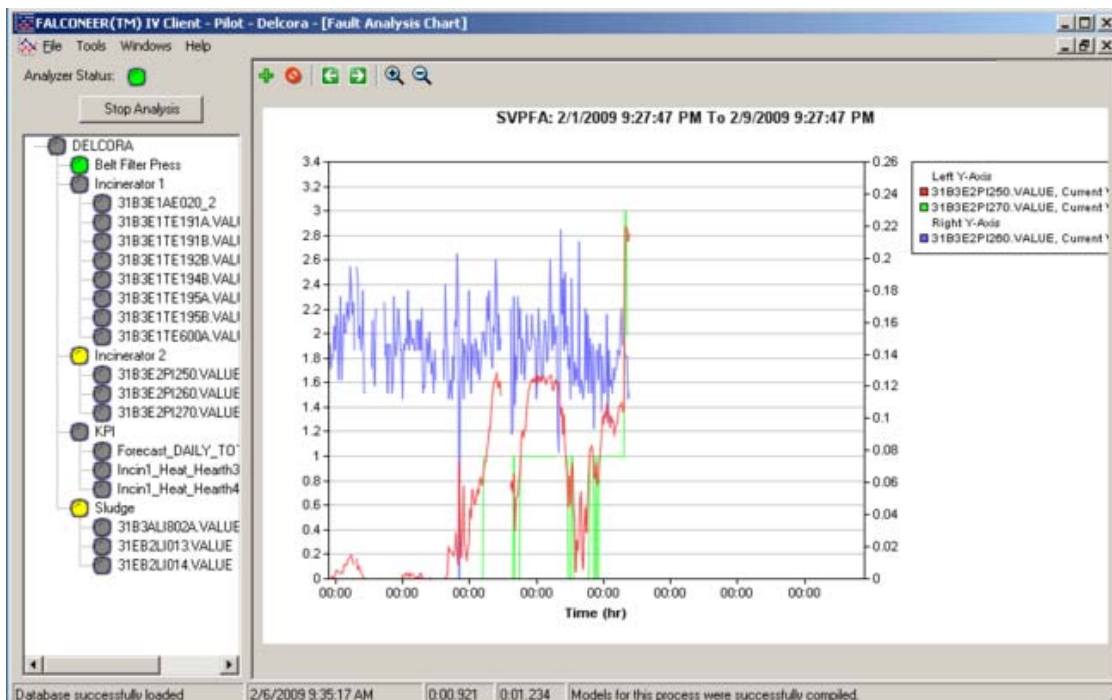


- 2) Pull up the Tools → Charting → Primary Models selection and select the responsible model to plot.
  - a. The Model Certainty trend will be in the Yellow or Red region if FALCONEER™ IV has determined that one or more tags associated with this model are significantly different than expected (due to faults, failures, or abnormal conditions).
  - b. Click on the trend line and the Fault Analysis chart appears with all the associated tags. You can plot all tags at once or remove all but one or two. This chart is essentially a trending and comparison chart. Any small or large changes should be readily apparent.
  - c. Clicking on one of the tag line trends will automatically generate the SPC chart if available.

The Primary Models charting tool plots any model's certainty factor along with its display, yellow alarm, and red alarm limits. Model 17 Chart is shown below. Every chart shows the model certainty factor as a line in black, the display threshold limits as lines in blue, the YELLOW alarm threshold limits as lines in yellow, and the RED alarm threshold limit as lines in red. Also, the chart shows five different zones, an upper and lower RED alarm zone, an upper and lower YELLOW alarm zone, and a green zone. Where ever the model certainty factor is in these zones indicates what level of alarm was triggered by this model. Green indicates no alarm, while red or yellow indicates RED or YELLOW alarm levels, respectively. Any primary model can be plotted, but only one primary model per chart.



**The Primary Model chart supports drill-down.** Clicking on the model's certainty factor line will display a Fault Analysis chart containing every tag used to calculate that model's residual. Below is the Fault Analysis Trending chart of 3 tags in Model 17.



**The Fault Analysis/Multiple Trending chart also supports drill-down.** Clicking on a data tag that is enabled in Virtual SPC will display the VSPC chart for that data tag. Double-clicking on a data tag that is NOT enabled in Virtual SPC is a quick way to remove that data tag from the chart.

Here are examples of the Fixed Distance VSPC chart that automatically display for PI250.Value and PI270.Value.

